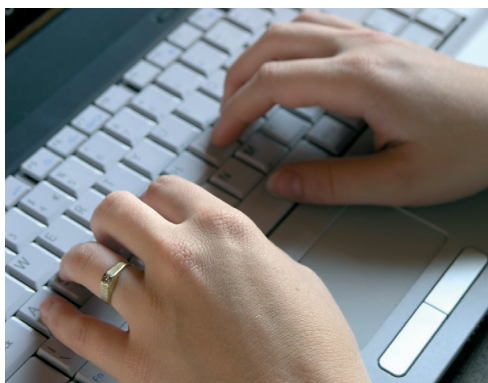


Itona C32

Mid-Range Desktop Thin Client



Itona C32

Fully featured

- Linux GIO2 operating system
- VIA C7 1GHz processor
- North Bridge : VIA CN896
- Highly reliable fanless design
- very low power consumption
- 512Mb RAM & 128Mb Flash
Memory - Expandable
- 4 USB ports
- In-built 10/100/1000
Networking
- 32 Bit graphics supports
1920 x 1200 wide screen
resolution

The ideal desktop client

Seen and not heard – that's Itona. That's because its fan-less design ensures totally silent operation. And, of course, it is pleasing and compact – freeing up valuable desk space.

Green Credentials

With an average power consumption of only 18.2 watts, the Itona is more than 4 times more efficient than a PC. It is also substantially lower than almost all its competitors.

A flexible, expandable mid-range thin client designed to deliver excellent performance and productivity. The new Itona C series thin client represents a significant advance in the provision of low cost server based computing. Highly specified with exceptional build quality, this thin client incorporates the most advanced features designed to handle the most demanding applications.

Not only is the C32 a powerful and innovative thin client, it's also designed with the environment and durability in mind. The efficient internal power supply combined with fan-less design ensures extremely low power consumption with excellent reliability and virtually silent operation.

The Itona C32 incorporates an impressive three year warranty backed by a worldwide support network and represents an unbeatable combination of affordability, quality, performance and service.



About VXL

VXL is one of the world's largest suppliers of thin clients. Established in 1976, VXL has grown steadily and now has over three hundred people worldwide – with offices in Germany, France, India, the United States and the United Kingdom. The company's headquarters are in Bangalore, India.



CITRIX partner

Solution Partner

 **vmware** | technology alliance
PARTNER

Itona C32

Part No
C32 - F3R5 128 MB Flash / 512 MB RAM

Model

C32 Linux GIO2 Operating System.

Standard Client Software

XDMCP, ICA, PN Agent, RDP, VNC,
VMware View Client, REXEC standard,
PPTP VPN.

Processor

- VIA C7 1 GHz Processor (North
Bridge: VIA CN896

System Memory

- Ram: 512Mb & Flash: 128Mb -
Expandable

Display Support

- Display Data Control (DDC) for
automatic setting of resolution and
refresh rate
- Video RAM: 16/32/64/128/256
MB. Selectable from BIOS (default
32MB). Display Res. 4:3 up to
1920x1440 32bit colour. Widescreen
up to 1920 x 1200 32 bit colour.

Interfaces

- 2 x Serial Port
- 1 x Parallel port
- 4 x USB 2.0
- 2 x PS/2 port
- One VGA type video output
- 1 x DVI-I Port
- Optional internal Wireless and/or
Smartcard reader
- Built-in Kensington Security Slot

Networking

- Autosensing, 10/100/1000 Ethernet,
RJ-45
- Wake On Lan
- PXE boot

Audio

- Line Out
- Mic

- Line In

Environmental

- Powered on: 0 to 40 °C
- Powered off: -20 to 60 °C
- Convectional cooling, fanless design
- Humidity : 20% to 80% maximum,
non-condensing

Physical Characteristics

- Worldwide auto-sensing
100-240 VAC
- 50/60 Hz, less than 20W (max)
- Average power usage: 18.2
Watts(Only with KBD, Mouse and
Monitor)
- Height: 229 mm
- Depth: 226 mm
- Width: 50 mm
- Weight: Approx 2.5Kg

Software

- Citrix ICA client 11.xx
- RDP Client : A Remote Desktop For
Linux 1.6.0, RDP6 x Compatible.
- VMware View Client
- PPTP VPN
- Ericom Blaze
- Ericom Webconnect
- VNC Client
- VNC Shadowing
- SAMBA Support
- Leostream Client
- XDMCP Protocol: Remote X
connection based on X server.
- Thin Print Client Agent
- Rexec command, RSH, SSH,
LaunchPA, telnet, CMD standard

Local Operating System feature :

- Updated Kernel 2.6xx
- X11R6 local windows manager
- LPR, ThinPrint, CUPS, SAMBA print

support

- Touch screen support

Server OS Compatibility/Support :

- Microsoft Windows Terminal Server
Edition, Windows server 2003/2008
- Citrix XenApp / Citrix Presentation
Server/ Citrix XenDesktop
- UNIX/Linux Servers (Redhat etc)
- Protocol Support :TCP/IP, NTP, DHCP,
FTP, HTTP

User Interface:

- Boot from Local flash
- User Interface Language: US English,
French, German.
- Keyboard language support: U.S.
English Standard, French, German,
Italian, U.K English, 30 others
included.

Management:

- Remote management, configuration,
and upgrades through XLmanage
client management software
(included)
- Wake terminal remotely (Wake-on-
LAN)
- Terminal configuration (IP
information, name, etc.)
- Remote Shadowing
- Complete image upgrade
- Pull/Push Updates

Regulatory Compliance

- Ergonomics: German EKI-ITB 2000
- Safety: cTUVus, TUV-GS, VCCI
- RF Interference: FCC B, CE, C-Tick
RoHS, WEEE.

Warranty

- Three years limited warranty



vmware®

technology alliance
PARTNER



CITRIX® partner

Solution Partner



Head Office: 'House of Excellence', No 17 Electronics City, Hosur Road, Bangalore 560 100, India
Tel: +91 80 30222525 (5 lines) **Fax:** +91 80 28520095 **E-mail:** sales@vxl.net **Web:** www.vxl.net
European Headquarters: Carrington Business Park, Carrington, Manchester, UK M31 4DD
Tel: +44 (0) 16 17 75 47 55 **Fax:** +44 (0) 16 17 75 48 66 **E-mail:** sales@vxl.net

Regional Offices

France

Tel: +33 (0) 1 42 17 00 03
E-mail: sales@vxl.net

Germany

Tel: +49 (0) 8761 1093
E-mail: sales@vxl.net

United States

Tel: +1 713 589 3273
E-mail: sales@vxl.net